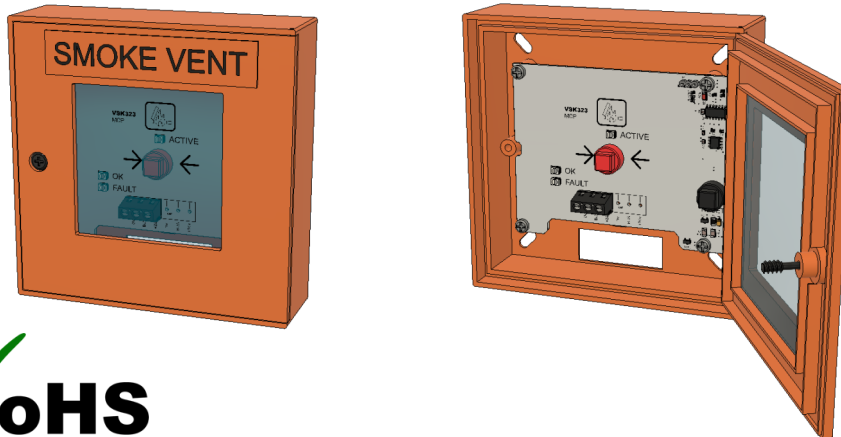




VSK323 Smoke Vent Call Point

3-Core with status indication and reset



**UK
CA**  **RoHS**
2002/95/EC

Specifications:

Supply Voltage:	24V DC +/- 20%
Absorbed Current:	18mA
Dimensions:	125x125x36mm (WxHxD)
Colour:	Orange
Mounting:	Surface mounting
Features:	<ul style="list-style-type: none">• Easy installation and operation• No special key required for service access• Breakable glass for emergency operation (replaceable)• Full status indication of a single zone control panel• Compatible with most single zone control panels• Two-way monitoring of faults• Only 3-core cable between call point and control panel

Description:

The VSK323 was designed for easy installation in standard smoke control systems where the installed cables have an insufficient number of cores for a standard 6-wire call point. No special key or tool is required for gaining access to the call point for periodic service and maintenance testing, making this a more convenient product for service engineers for the future. Easy installation with clearly marked connections.

Made in the UK
RoHS compliant

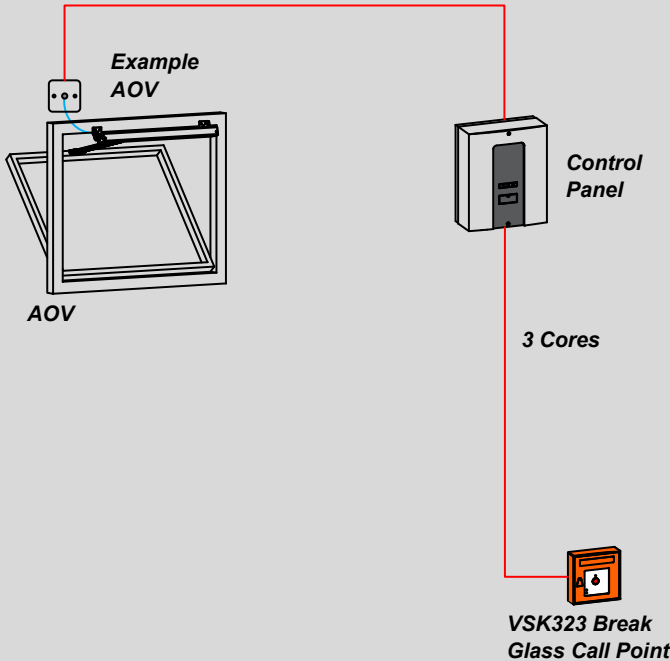
Revision 1.0 2022



VSK323 Smoke Vent Call Point

3-Core with status indication and reset

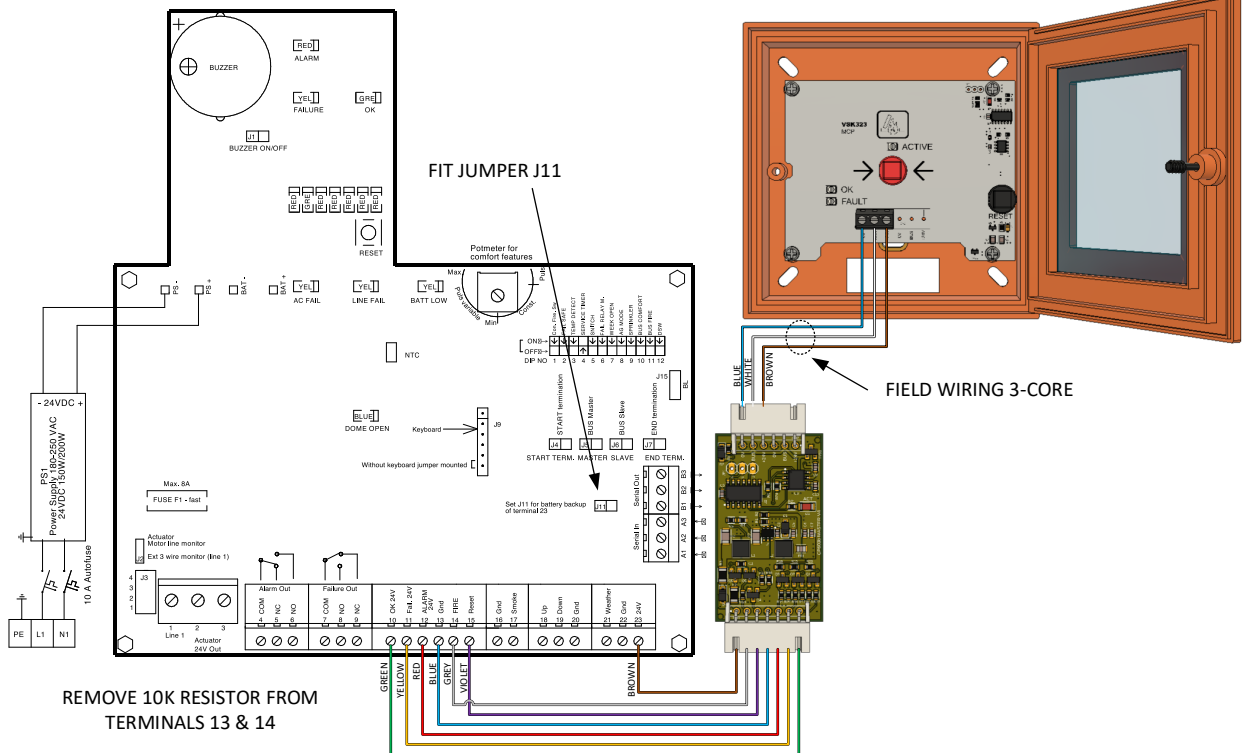
Example Scenario (Single-Zone Only):



Example installation scenario shown for a single-zone control panel with a VSK323 at a remote location.

The control panel would be normally located within an electrical riser making the remotely located VSK323 the primary interface with the smoke vent system. This makes a neat solution with the status indication and manual controls of the VSK323 located at the entrance of the building.

Connection Detail:



Made in the UK
RoHS compliant

Revision 1.0 2022

© 2022 Ventlux Ltd

sales@ventlux.co.uk