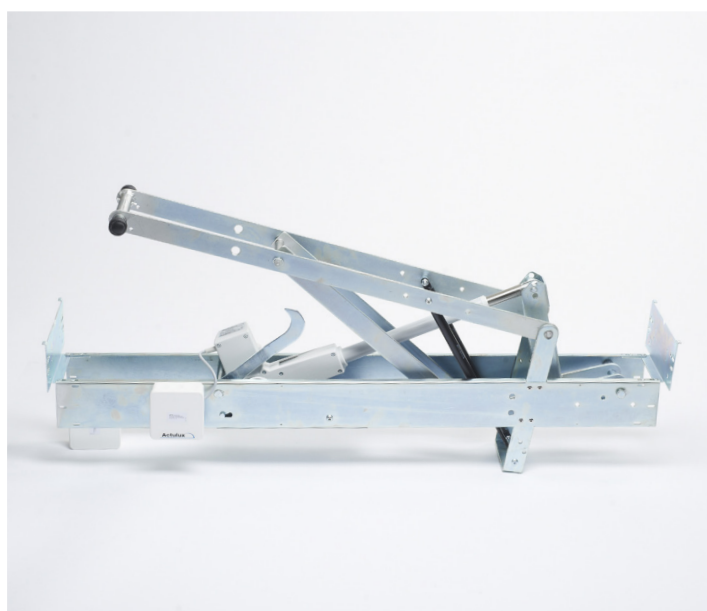
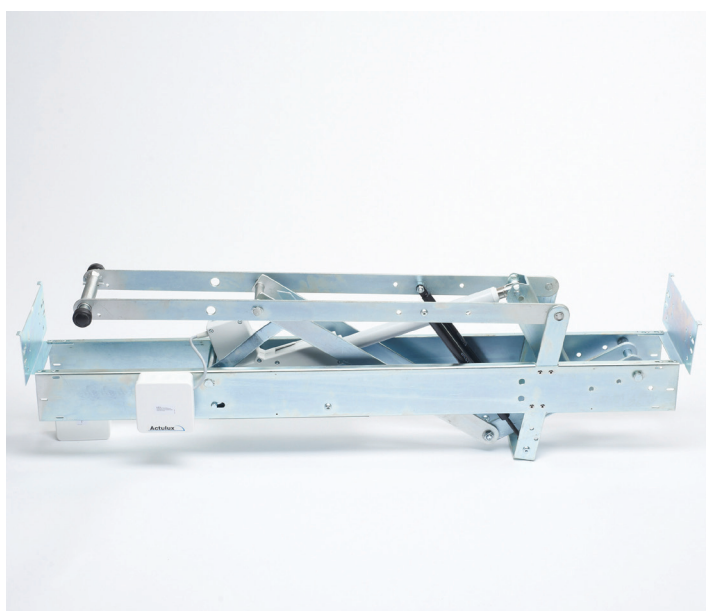
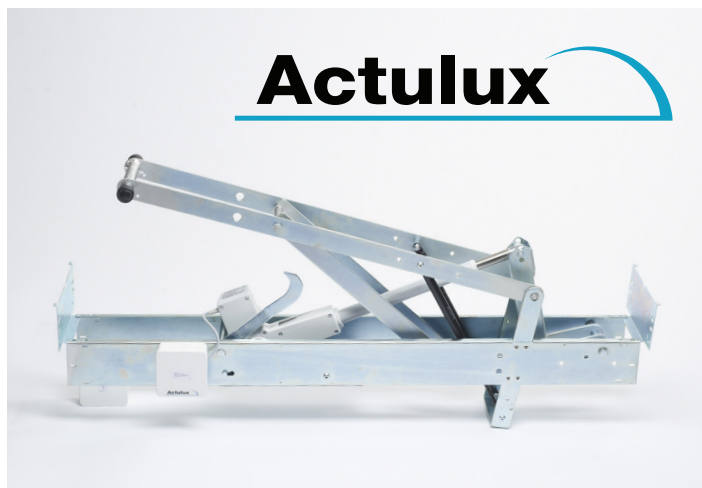
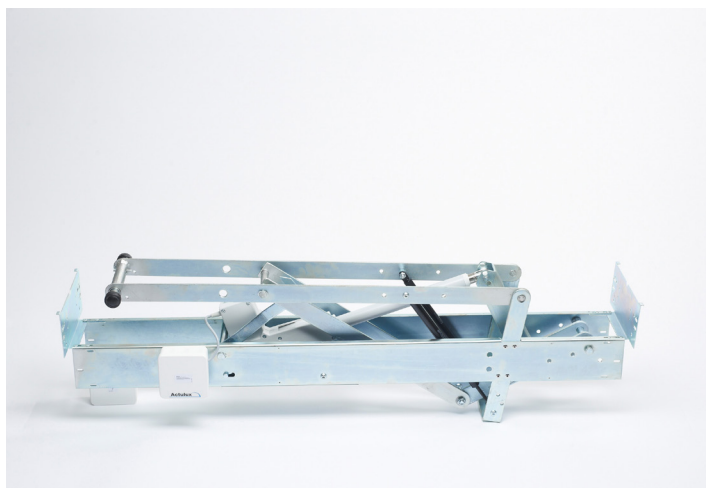




Electrical Opening System - SA Power Single

maximum stability and minimum need of space





Electrical Opening System - SA Power Single

The opening system sets new standards within the electrical opening and closing of skylight, smoke hatch, glass roof and façade solutions etc. where there is a need for fire and comfort ventilation, according to the European Standard EN 12101-2.

MAXIMUM STABILITY AND POWER

The opening system is based on a unique geometrical movement by means of an electrical actuator, which is fitted in a system for which a patent is applied. This system gives a maximum stability and power exploitation both for opening and closing.

The opening system is especially suitable for medium and large skylights.

SINGLE AND COMPACT OPENING PRINCIPLE

The opening system has an elegant design, which with its single and compact opening principle demands a minimum of space in closed position as well as in operation (It does not take space in the room under the skylight or smoke hatch). This gives the possibility to pre-install the opening system.

BUILT-IN ELECTRONIC CURRENT LIMITER

The electrical actuator is connected with a built-in electronic current limiter (type LIP) that works as an overload protector by end stop and locking. At the same time, it gives the possibility to determine the current consumption as well as the opening time.

| Model | Power supply | Traverse length (build-in dimen.) | Opening angle (fire)* | Opening force (cover weight incl. snow)** Traverse length: kg | Max. cover weight (closing force after full fire opening)*** Traverse length: kg | Temperature |
|-----------------|--------------------------|-----------------------------------|-----------------------|---|---|------------------------------|
| SA Power Single | 24VDC / 4A 48VDC / 2A | 88-200 cm | Up to 160° | 88-120 cm: 300 kg 130-150 cm: 220 kg 160-180 cm: 200 kg 190-200 cm: 150 kg | 88-120 cm: 55 kg 130-150 cm: 40 kg 160-180 cm: 35 kg 190-200 cm: 30 kg | -25°C - +55°C (+75°C)**** |

(*) As option a special "actuator stop kit" can easily be post mounted to reduce the max. opening angle in any angle

(**) Depending on geometry and construction

(***) Special "closing kit" can be mounted to improve closing power

(****) Requires special lubrication

Note: 2 pcs. of opening systems can be mounted in the same window/skylight - then figures in above table can be approx. doubled

FEATURES

For comfort and smoke ventilation in domes, skylights and smoke hatches

Very easy and flexible mounting

Opening angle: 0° to 160°

Extremely low noise level

Opening time: max. 60 seconds

Designed for min. 10.000 comfort openings and min. 1.000 fire openings

Degree of protection: IP54 Corrosionclass: C2 (pregalvanized) Operation mode: S3 25% duty cycle

Meets the demands acc. to EU standard EN12101-2

Unique and elegant design (takes no space in the room under the upstand)

Incl. overload protection

Galvanized

No maintenance required, only yearly inspection acc. to local legislation

Patented opening system