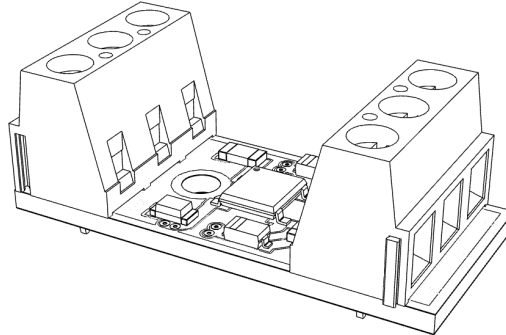




BM03w +/-24v DC > 3-Wire Module

Converts +/- polarity reversing 2-wire to 3-wire



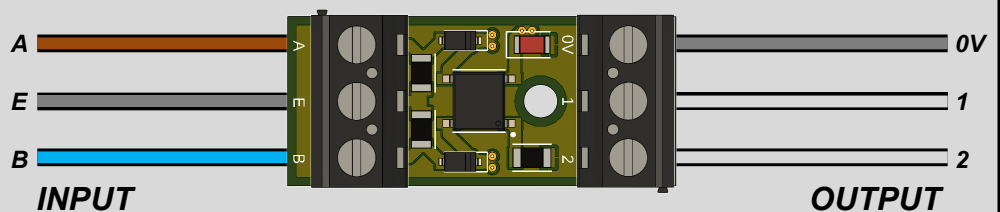
Product Specification:

Maximum Input Voltage:	24V +/- 20%
Maximum Output Current:	0.7A (sustained, absorbed by attached drive—1A surge)
Forward Voltage Drop:	1.4V Max @ 24.0V/0.7A
Dimensions:	35x15x13mm (WxLxH)
Maximum Cable:	1.5mm ² CSA
Mounting:	Adhesive backing*
Features:	<ul style="list-style-type: none">• End of line monitoring capable: 10kΩ, 27kΩ & 47kΩ variants available.• LED indication of input supply present.
Product codes:	10k Ω : BM03w-10, 27k Ω : BM03w-27 & 47k Ω : BM03w-47. No end of line monitoring: BM03w-0.

Connection Detail:

DO NOT SHORT CIRCUIT OUTPUTS!

A: Input +/-
B: Input +/-
E: EOL Monitoring
0v: Output 0v**
1: Output +24v***
2: Output +24v***



*Adhesive mounting not to be placed on conductive surface. Designed to be mounted in ceramic joint box (not supplied).

**0v is referenced to outputs only.

***+24v output state depends on input polarity. Actual voltage may vary on source.

Tested with BLE24 drives and controls from major manufacturers.